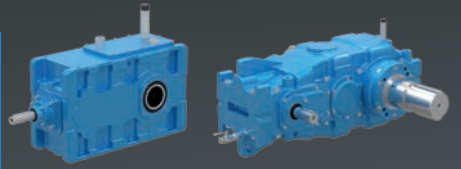


Ship to Shore (STS)

Mobile Harbor Crane (MHC)



Brevini EvoMax™ Travel, Trolley and Hoisting Gearboxes

- Improved torque distribution curve, with 5 new sizes available
- Increased torque density, providing more mechanical power without compromising weight and size
- Curved top and/or bottom housing options, optimised to best fit hoisting applications

- Improved gearing profiles and low oil level, resulting in higher efficiency and reduced noise
- New housing material options, allowing for superior impact toughness and low temperature operation
- High level of modularity and multiple accessories as standard



GWB™ Industrial Driveshafts

- Complete product range featuring flange/swing diameter from 120 to 1300 mm
- Superior bearing life
- High torque capacity



Brevini™ Winch Drive SLW Series

- Torque range up to 460 kNm
- Plug-in planetary solution
- More space for easy access to maintenance and service components



Brevini™ Slewing Drives SLS Series

- Torque range up to 370 kNm
- Modular design, inline or right angle configuration
- Wide option of output support configuration (front flange and dual spigot supports, with and without eccentricity)



Spicer™ Track Drives CTU 3200

- Internal multidisc parking brake
- Manual disengagement device for towing
- High radial and axial load capacity bearings